

visit LOCKHART SHIRE

visitlockhartshire.com.au

#visitlockhartshire

02 6920 5674



How far are we from you?
Well, it depends.
Here you'll see some handy distances (in kilometres) to help.

	Lockhart	Milbrulong	Pleasant Hills	The Rock	Yerong Creek	Albury	Wagga Wagga	Griffith
Lockhart	█	15	38 (via Milbrulong)	30 (via Milbrulong)	51 (via Osborne)	105	61	157
Milbrulong	15	█	23	26	36	101	56 (via The Rock)	171
Pleasant Hills	38 (via Milbrulong)	23	█	48	36	78	80	186
The Rock	30 (via Milbrulong)	26	48	█	15	97	31	182
Yerong Creek	51 (via Osborne)	36	36	15	█	82	46	204
Albury	105	101	78	97	82	█	128	261
Wagga Wagga	61	56 (via The Rock)	80	31	46	128	█	190
Griffith	157	171	186	182	204	261	190	█

Source: Google Maps

Lockhart Shire Council acknowledges the traditional custodians of the land, the Wiradjuri people, and pays respect to Elders past, present and future, and extends the respect to all First Nations Peoples in Lockhart Shire.

To Melbourne
(via Albury Wodonga)

Lockhart Shire is part of

THE RIVERINA

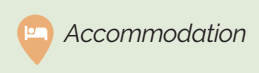
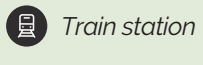
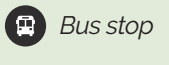
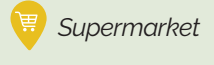
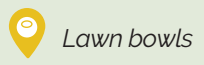
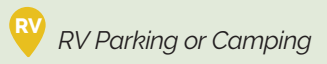
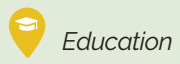
#theriverina
theriverina.com.au

**MURRUMBIDGEE
TRAILS**

#murrumbidgeetrails
murrumbidgeetrails.com.au

Murray River

Village
Maps
Legend:



Disclaimer: Lockhart Shire Council and their officers, agents and contractors have ensured that the details appearing in this publication are correct at the time of printing. We accept no responsibility for any inaccuracy, mis-description whether by inclusion or omission or withdrawal. Maps are not to scale and are indicative only. September 2022.

Graphics Credit: Minta Viski