

Lockhart Shire Bird Trail Wiradjuri Country



THE RIVERINA



**Lockhart Shire Visitor
Information Outlet**
39 Urana Street,
Lockhart NSW 2656



Ph: 02 6920 5674



**visitlockhartshire.com.au
#visitlockhartshire**

Disclaimer: Lockhart Shire Council and their officers, agents and contractors have ensured that the details appearing in this publication are correct at the time of printing. We accept no responsibility for any inaccuracy, mis-description whether by inclusion or omission or withdrawal. Maps are not to scale and are indicative only. May 2024.

Images credit: Josh Bett
Photography
Graphic design: Minta Viski



visit
**LOCKHART
SHIRE**



The Rock Nature Reserve - Kengal Aboriginal Place

📍 35 15 48 S – 147 04 53 E

The Rock Nature Reserve – Kengal Aboriginal Place is important to Wiradjuri people known by them as Kengal. The Reserve is a rocky outcrop with mainly open woodland dominated by Grey and White Box, Blakely's Red Gum, with White and Black Cypress Pine areas.

Access: The nature reserve is approximately 6km from The Rock township on the southern side of the Lockhart Road. It has an area of approximately 340ha. There are walking trails, and visitor's facilities for day use only.

Birds observed include: Peregrine Falcon, Brown Treecreeper, Turquoise Parrot, Glossy Black Cockatoo, White-browed Babbler, Eastern Yellow and Red-capped Robins, Thornbills and Honeyeaters.

Galore Hill Scenic Reserve

📍 35 07 00 S – 146 45 95 E

Galore Hill Scenic Reserve is an isolated rocky outcrop having open box woodland, with Grey Box being dominant in lower areas and Dwyer's Red Gum, and Drooping Sheoke on the upper slopes and ridges. The reserve also has arboretums of native plants established, these include plantings amongst others of, acacias, eremophilas, hakeas and grevilleas.

Access: The reserve is approximately 500ha and is 15km north of Lockhart on the Narrandera Road. There are good gravel access roads to and throughout the reserve. Visitor facilities are available, including a lookout area at the summit.

Birds observed include: A known breeding site of the Peregrine Falcon. Other birds include Glossy Black Cockatoo, Golden Whistler, Dusky Woodswallow, Rainbow Bee-eater, Diamond Firetail and Blue Fairy Wren.

Brookong State Forest

📍 35 14 80 S – 146 38 93 E

Brookong State Forest is a Box Pine Woodland dominated by White Cypress Pine and Grey Box, with areas of Yellow Box.

Access: The forest is approximately 6km west of Lockhart on the Urana Road, and is an area of 346ha. The western section of the forest provides better birding opportunities. Roads within the forest are graded fire trails.

Birds observed include: Red-rumped Parrot, Red-capped Robin, Australian Raven, Thornbills and Pardalotes.

Tootool Wetlands

📍 35 14 65 S – 146 58 65 E

Tootool Wetlands is a isolated River Red Gum remnant area, which is part of Bullenbong Creek.

Access: Located northwest of Tootool on Hendersons Road.

Birds observed include: Apostlebird, Grey Fantail, Friarbirds and Pardalotes are amongst birds observed here.

Pleasant Hills Esplanade

📍 35 27 47 S – 146 47 53 E

The Pleasant Hills Esplanade is a significant piece of vegetation of grassy box woodland, with an overstorey of white and grey box trees, along with White Cypress Pine. Home to native wildlife, including the Grey-Crowned Blabber whose population has declined through the years. A walking track along with seating and a bird hide make it a great visit

Access: Entrances off Manson and Crawford Street

Birds observed include: Birds Observed Include Grey Crowned Blabber, Eastern Rosella, Galah and Cockatoo

Lockhart Community Forest

📍 35 18 00 S – 146 55 5 E

Milbrulong State Forest is made up of white cypress pine, with larger trees of white box, yellow box and bullock.

Access: Curries Lane, French Park

Birds observed include: Red Capped Robin, Brwon Tree Creeper, and Hooded Robin.

Other Locations

Birdlip Resevre – The Rock

Brookong Creek – Lockhart

Burkes Creek – The Rock

Five Ways Reserve

Grubben TSR

Mundawaderra Creek - Crossing with Five Ways Road and area to the North of the bridge.

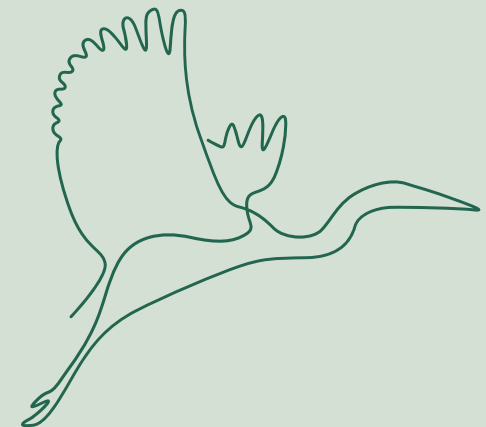
Lockhart, Mundwarry, The Rock, Yerong Creek Cemeteries

Lockhart, The Rock and Yerong Creek Sewer Ponds

Milbrulong Water Tower and Rosella Walk

Private Properties

Quandong Park – Pine and Box Woodland and Walking Track - Milbrulong





Lockhart Shire
Bird Trail Map

